

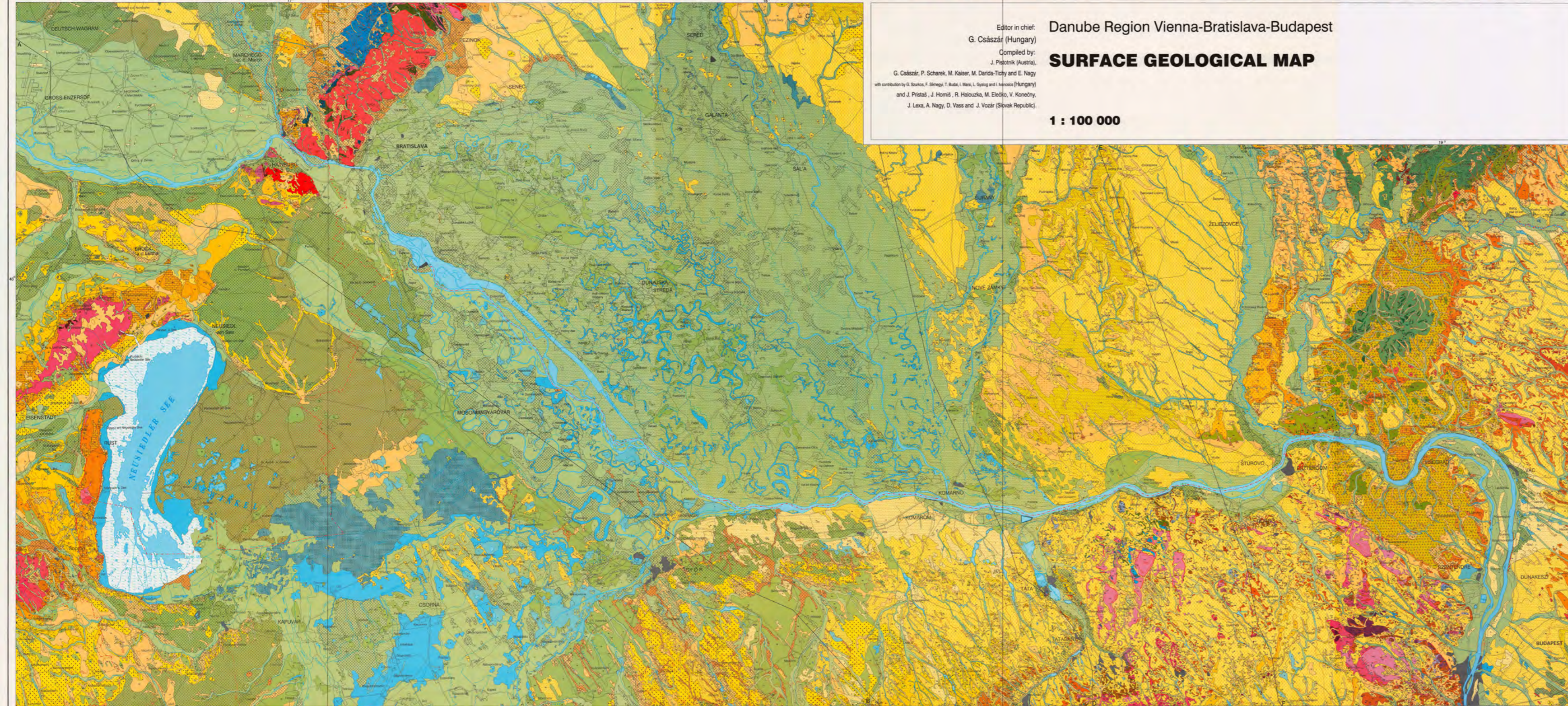
Editor in chief:  
G. Császár (Hungary)

Compiled by:  
J. Págotník (Austria),  
G. Császár, P. Scharek, M. Kaiser, M. Darida-Tichý and E. Nagy  
with contribution by G. Szurkos, F. Síkhegyi, T. Budai, L. Mész, L. Otyágo and I. Hercovics (Hungary)  
and J. Pristaš, J. Horniš, R. Haluzka, M. Elečko, V. Konečný,  
J. Lexa, A. Nagy, D. Vass and J. Vozár (Slovak Republic)

Danube Region Vienna-Bratislava-Budapest

# SURFACE GEOLOGICAL MAP

1 : 100 000



<b>QUATERNARY</b>	101	Quaternary deposits
<b>NEOGENE</b>	102	Quaternary deposits
<b>PALEOGENE</b>	103	Quaternary deposits
<b>MESOZOIC</b>	104	Quaternary deposits
<b>PALEOZOIC</b>	105	Quaternary deposits